



Under the Influence- Juveniles in the New Mexico State Juvenile Probation System

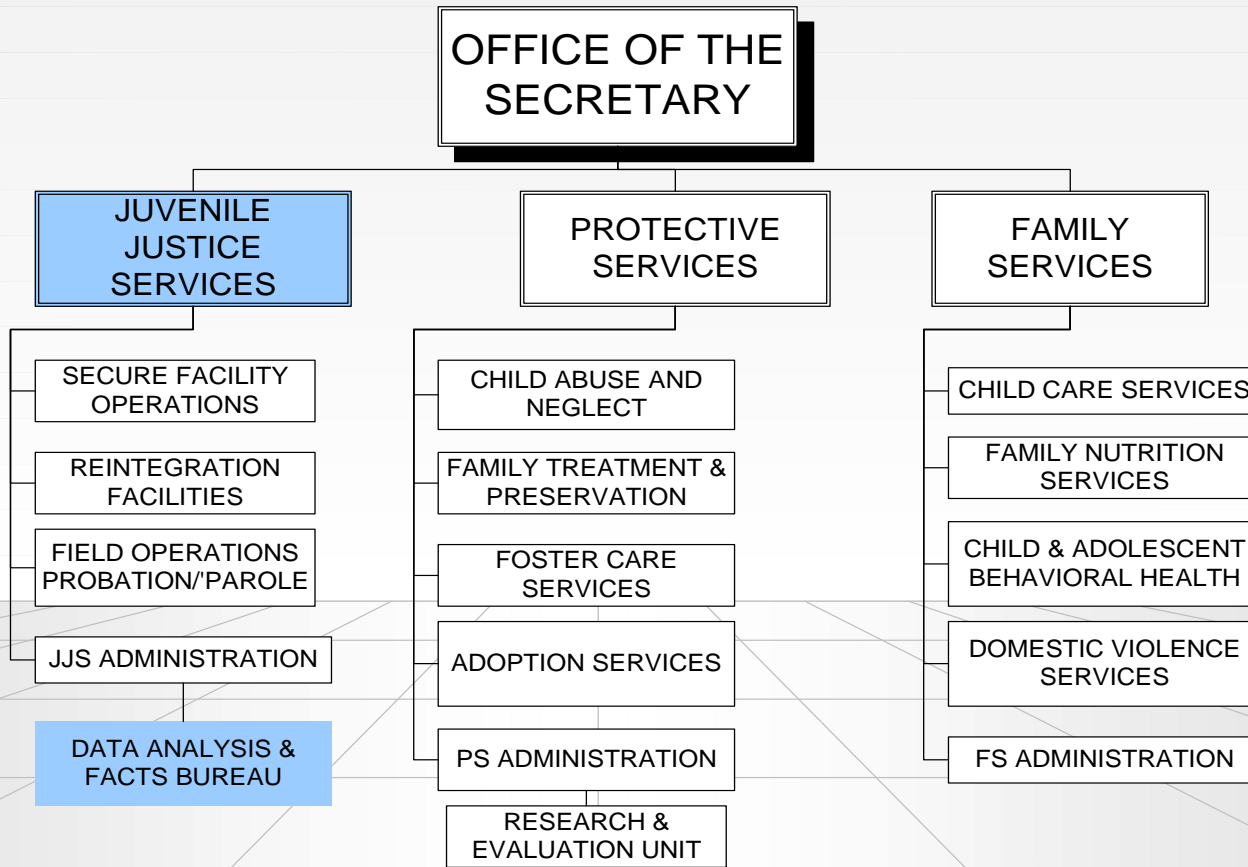
**Judith S. Harmon
Management Analyst
Data Analysis and Facts Bureau
Juvenile Justice Services
New Mexico Children, Youth and Families Department**

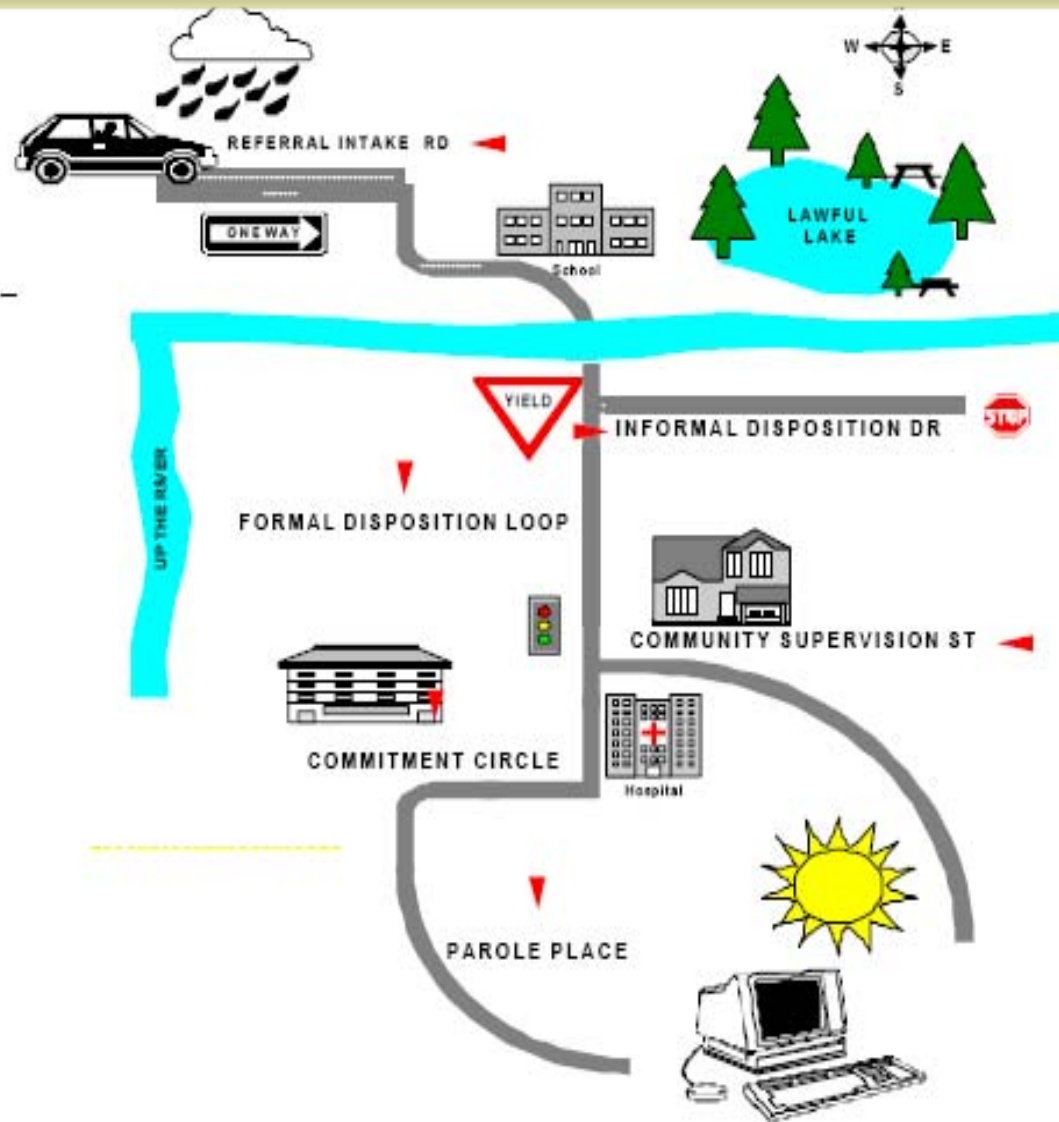
**International Traffic Records Forum
St. Louis, MO
Tuesday, July 24, 2007**



Organizational Chart

NEW MEXICO CHILDREN, YOUTH AND FAMILIES DEPARTMENT







Juvenile Justice Process in New Mexico

- ❖ Child (10-17) involved in an incident results in police response to a call
- ❖ Child arrested, or name is put on police report
- ❖ Case referred to Juvenile Probation
- ❖ Preliminary Inquiry done by Juvenile Probation Officer (JPO)
- ❖ If felony, case referred to Children's Court
- ❖ If misdemeanor, case JPO has discretion to handle or refer to prosecution for review
- ❖ JPO decides "Informal Conditions"
 - ❖ Community service
 - ❖ Family therapy
 - ❖ Attending school
 - ❖ Stay out of trouble
 - ❖ Drug education for child and parents



Family Automated Client Tracking System

(FACTS)

- FACTS statewide information system
 - Wide Area Network (WAN) environment
 - linkages to Local Area Networks (LAN).
- Serves 1,964 users in Children, Youth and Families Department's (CYFD) program services areas
 - Protective Services
 - Juvenile Justice
 - Family Services
- Program support divisions
 - Office of the Secretary
 - Financial Services
 - Employee Support



FACTS

❖ State Level Data

❖ FACTS - for Risk Factors and Outcomes

❖ Started for JJS in 10/1999

- ❖ Arrests and other referrals – including history for 6 years

- ❖ Formal case processing and dispositions

- ❖ Supervision on Probation or Parole

- ❖ Juvenile Commitments

- ❖ Treatment Planning

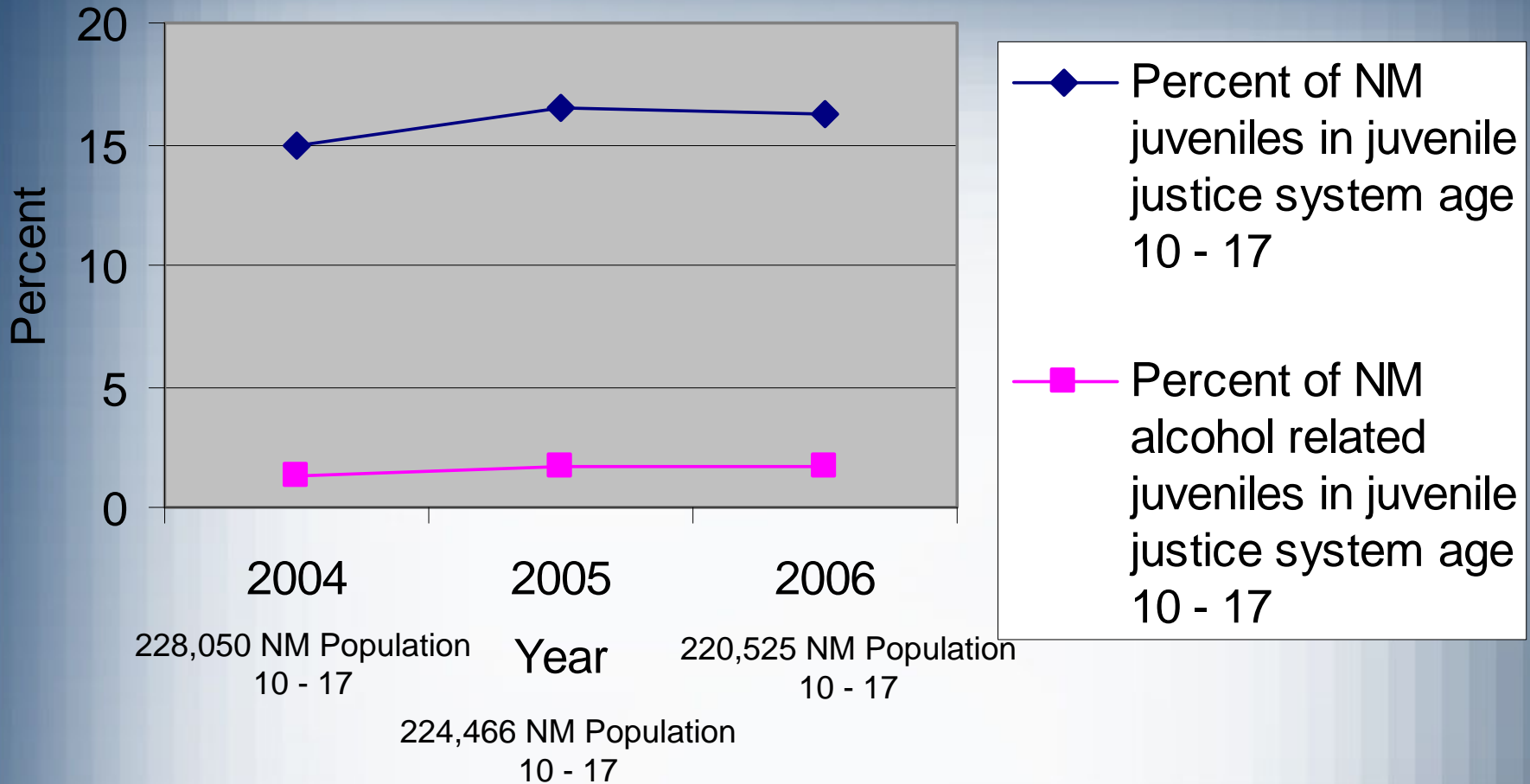
❖ Started for PS/FS in 1997

- ❖ Child welfare substantiated cases back to 1986

- ❖ Child welfare referrals and all investigations since 1997



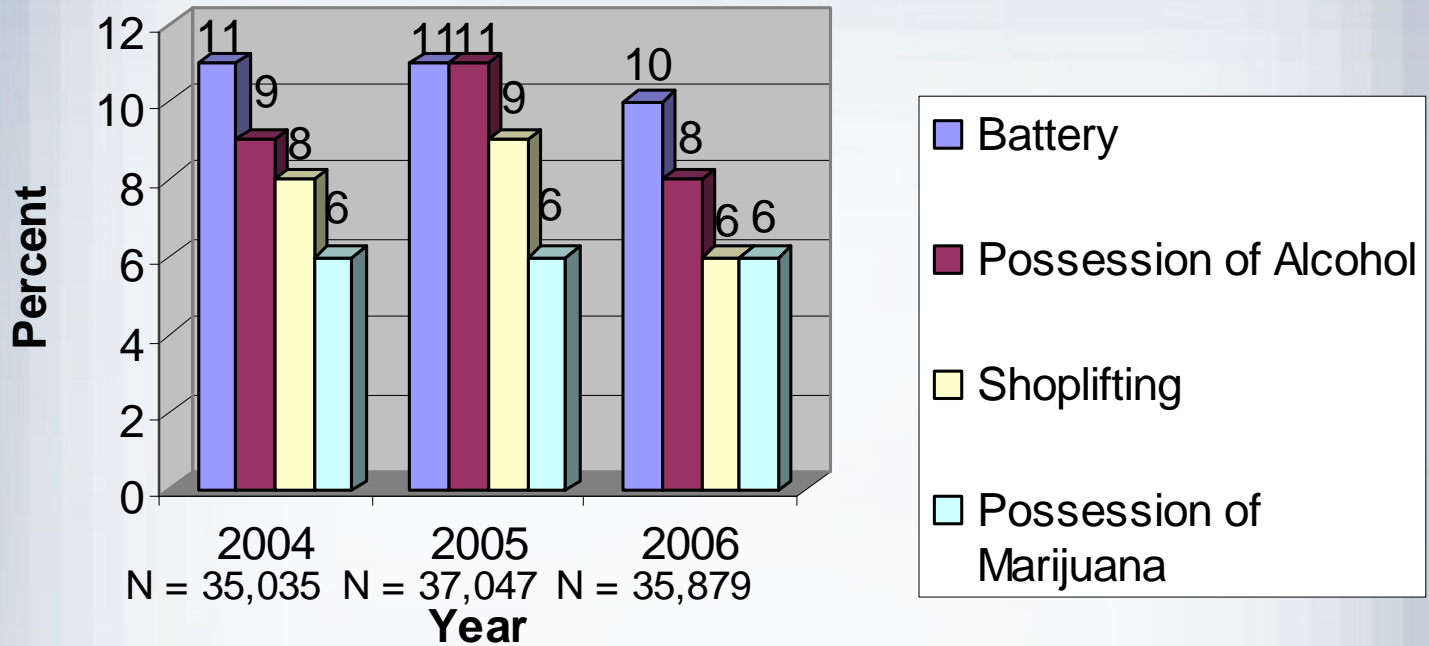
Percent of Juveniles in Juvenile Justice System



Source: FACTS 2007, US Census



Highest Percentage of Individual Charges for Juvenile Offenders in New Mexico



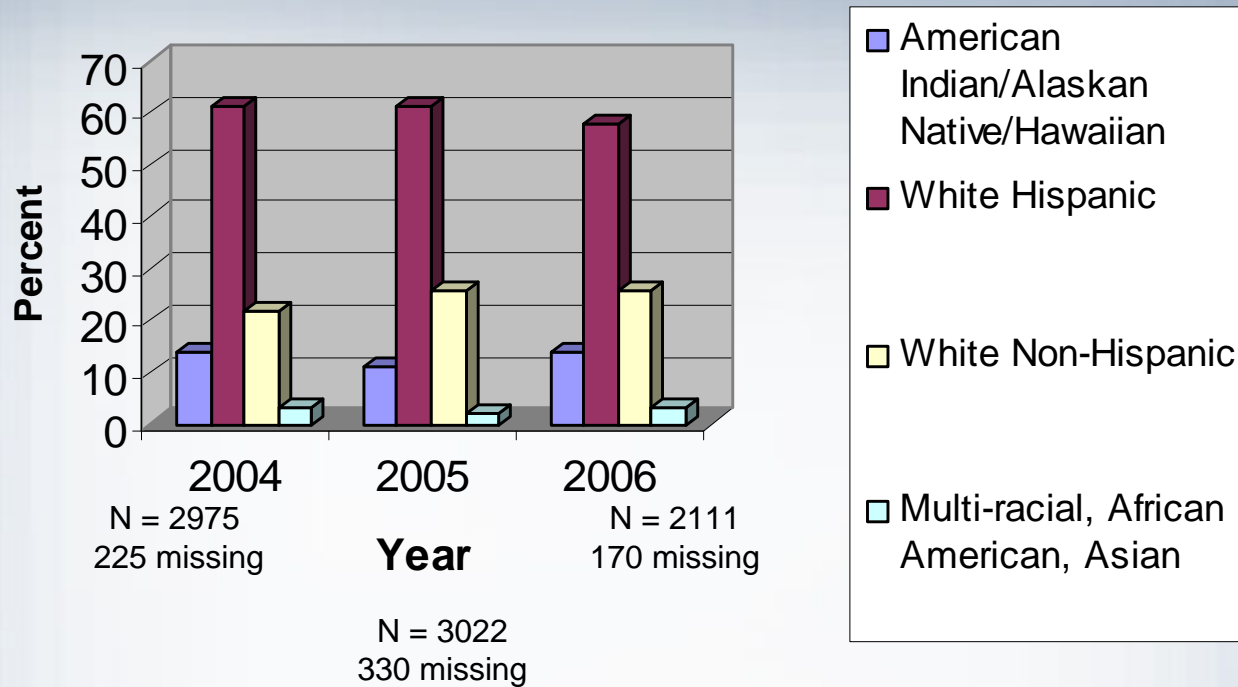


New Mexico Juvenile Charges Relating to Alcohol

- ❖ DWI homicide by vehicle, felony DWI and great bodily injury by vehicle
- ❖ Aggravated 1st DWI, Aggravated 2nd DWI
- ❖ DWI 1st, DWI 2nd, DWI 3rd
- ❖ Possession of alcohol, selling or giving alcohol to minors

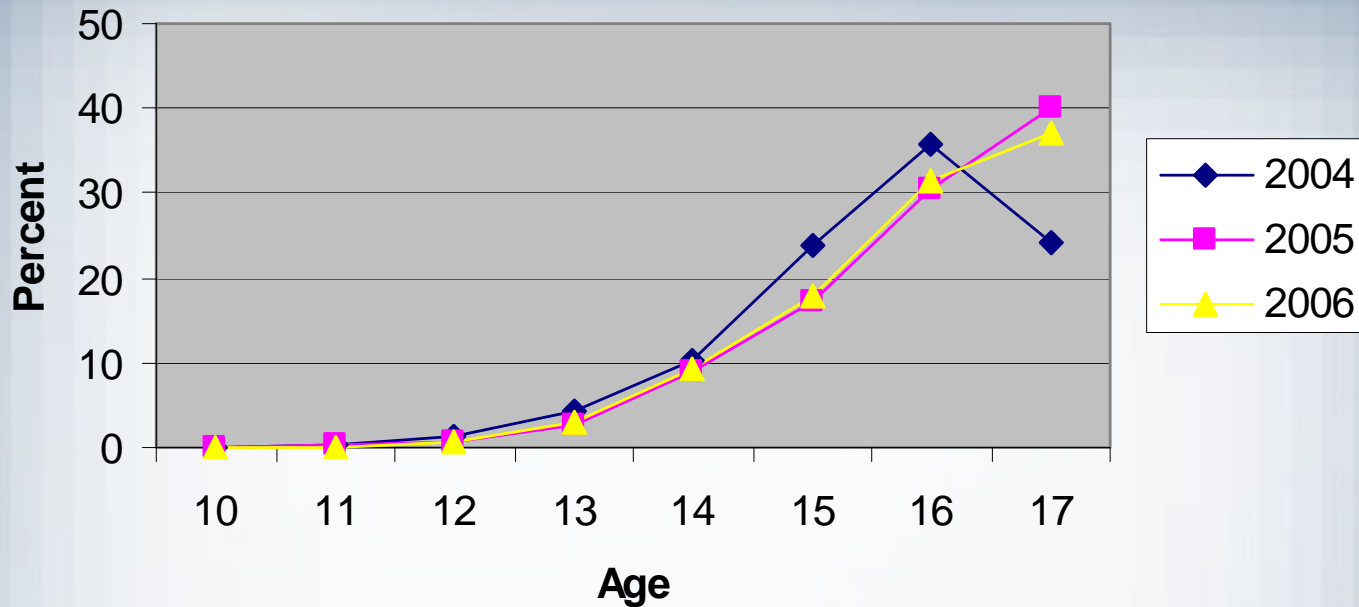


Ethnicity of Alcohol Related Juvenile Offenders in New Mexico



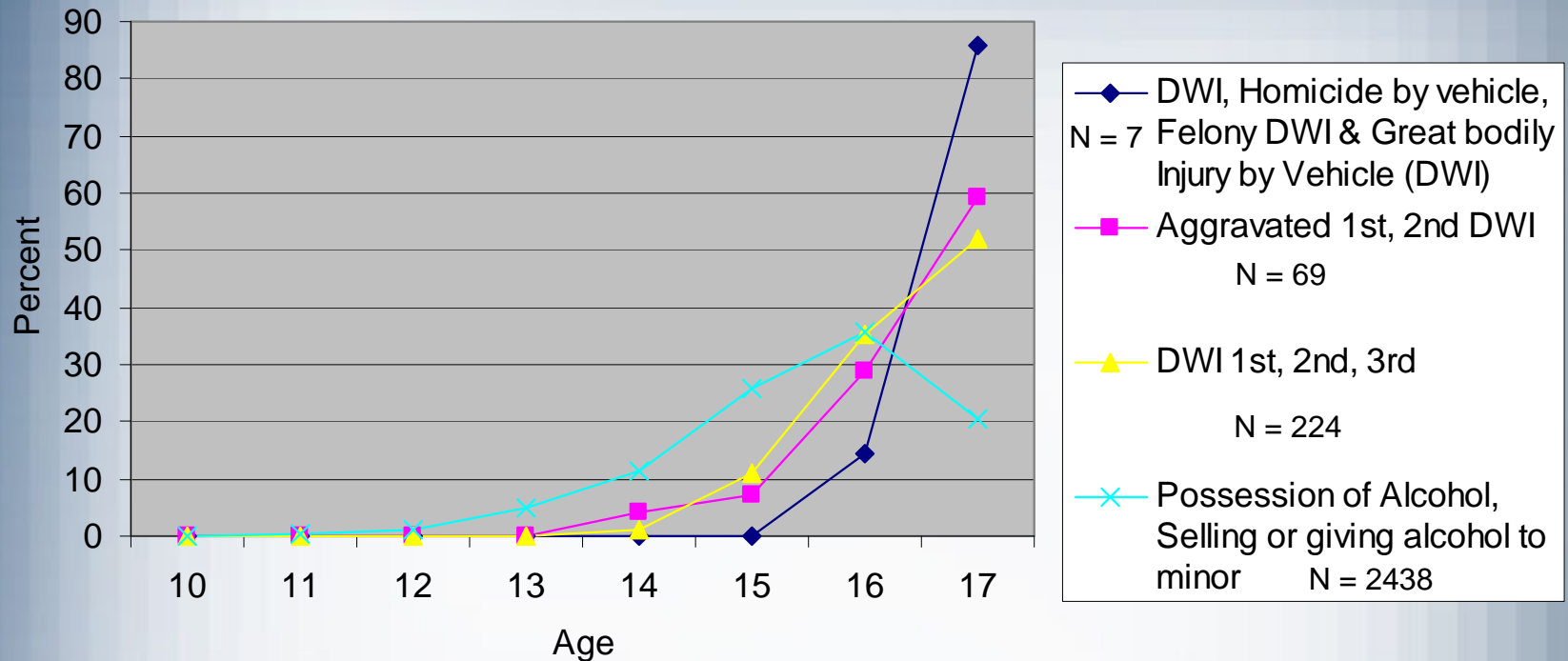


Age of Juvenile Offenders in Alcohol Related Offenses in New Mexico 2004 - 2006



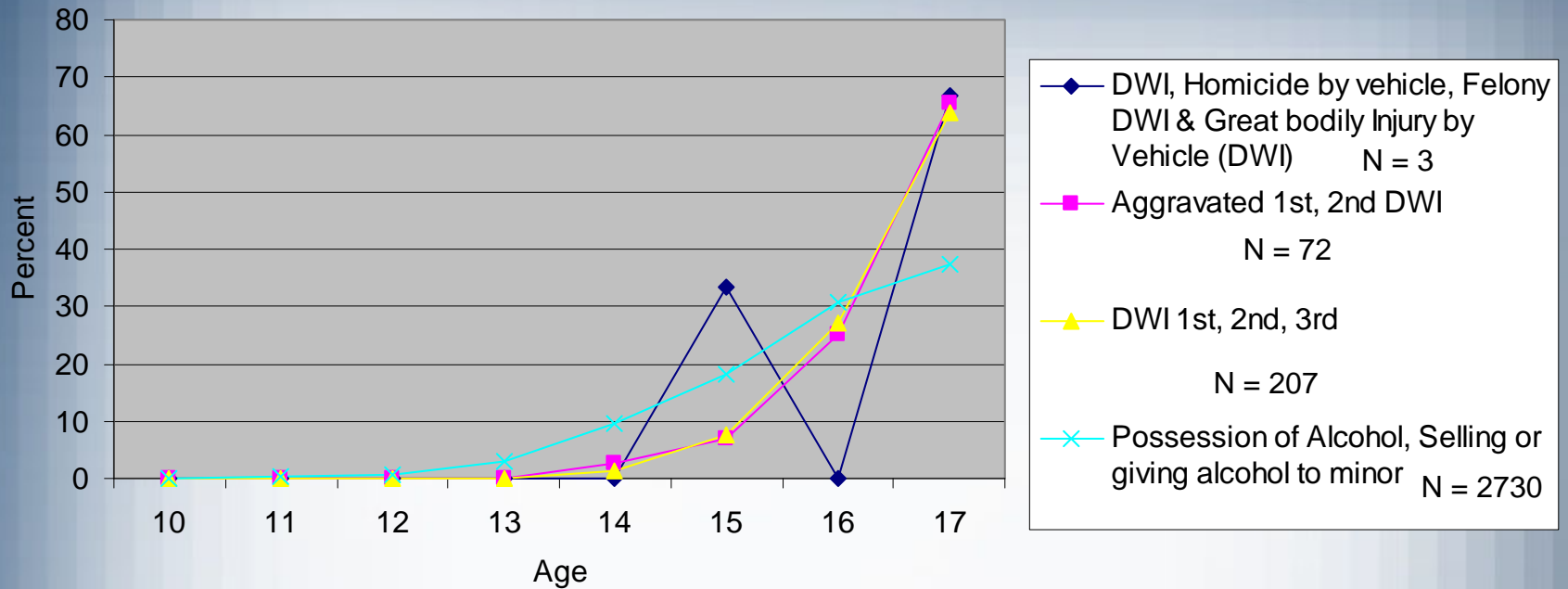


Alcohol Related Offenses by Age of Juvenile Offenders in New Mexico, 2004



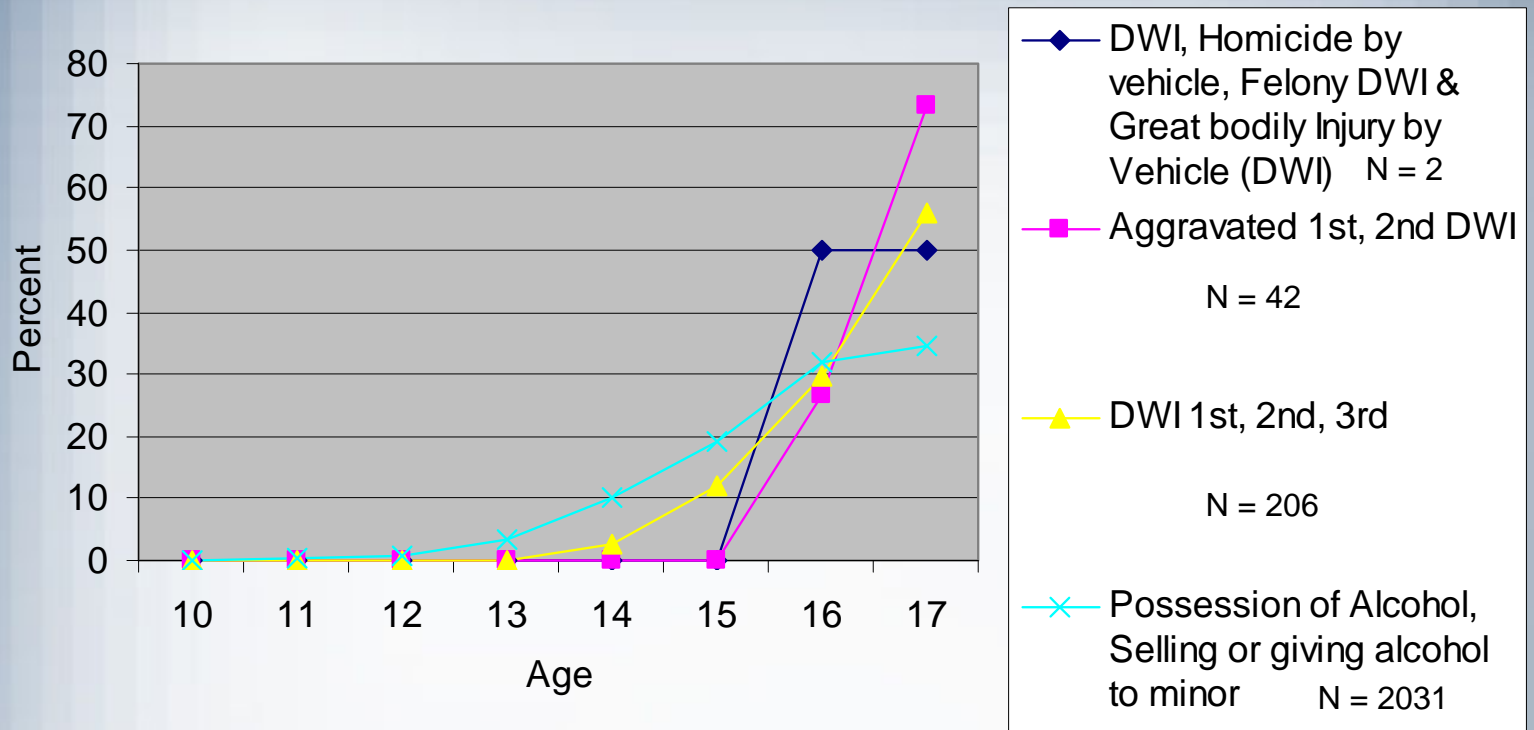


Alcohol Related Offenses by Age of Juvenile Offenders in New Mexico, 2005





Alcohol Related Offenses by Age of Juvenile Offenders in New Mexico, 2006





Juvenile Court Punishments

- Formal Dispositions
 - Time Waiver
 - Child completes educational programs
 - Community service
 - Don't get into trouble for 6 months
 - Consent Decree
 - 6 months supervision by JPO
 - Counseling
 - Curfew
 - Random urinalysis
 - Community service
 - Restitution
 - Educational programs
 - Structured activities



Juvenile Court Punishments (continued)

- ❖ Evaluation
 - ❖ Placed at Youth Diagnostic and Development Center (YDDC)
 - ❖ 15 day evaluation

- ❖ Commitment
 - ❖ Result of a serious offense
 - ❖ 3 or more felony offenses within last 3 years
 - ❖ Commitments last 1-2 years to a state facility

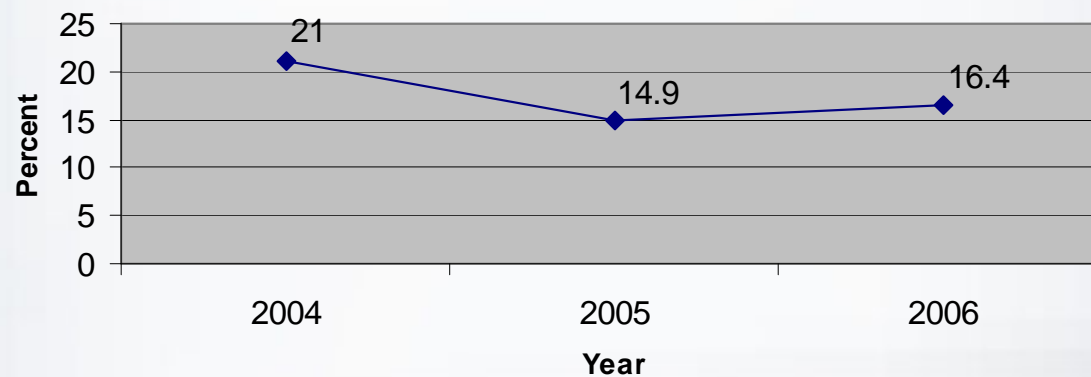
- ❖ Youthful Offender
 - ❖ Court decides whether to treat offender as juvenile
 - ❖ Commitment until 21st birthday

- ❖ Serious Youthful Offender
 - ❖ Mostly 1st degree murder –adult court tries case as a juvenile



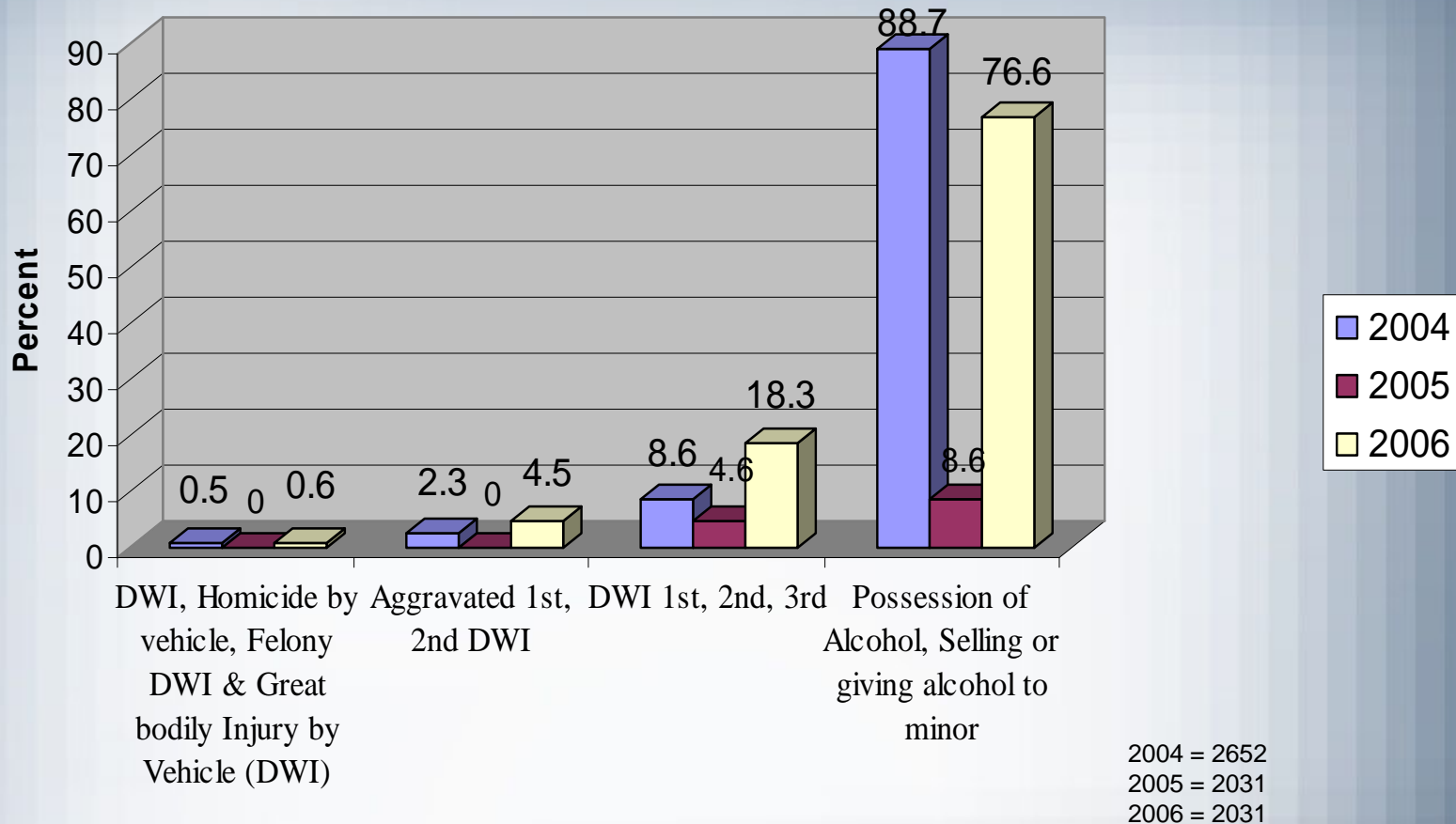
FORMAL CONDITIONS

- ❖ 2004, 2005, 2006
- ❖ 100% DWI Homicide by vehicle, Felony DWI & Great bodily harm by vehicle (DWI)
- ❖ 100% Aggravated 1st, 2nd DWI
- ❖ 100% DWI 1st, 2nd 3rd
- ❖ Possession of Alcohol , Selling or giving alcohol to minor





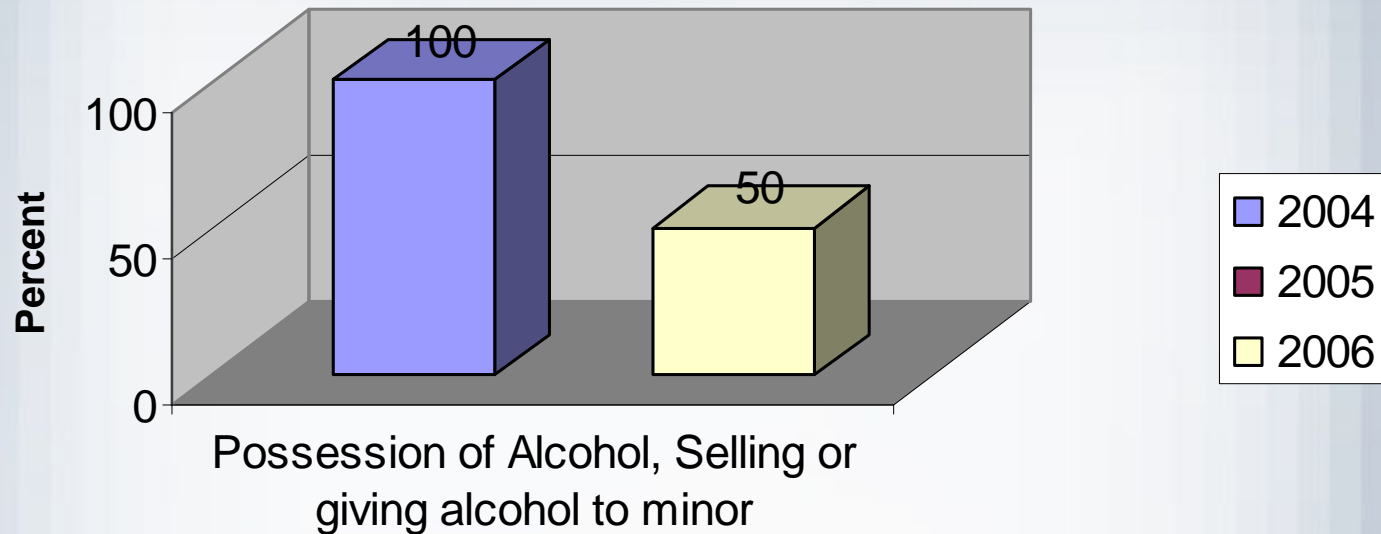
2004 - 2006 First Offense Possession of Alcohol, Selling or Giving Alcohol to Minor





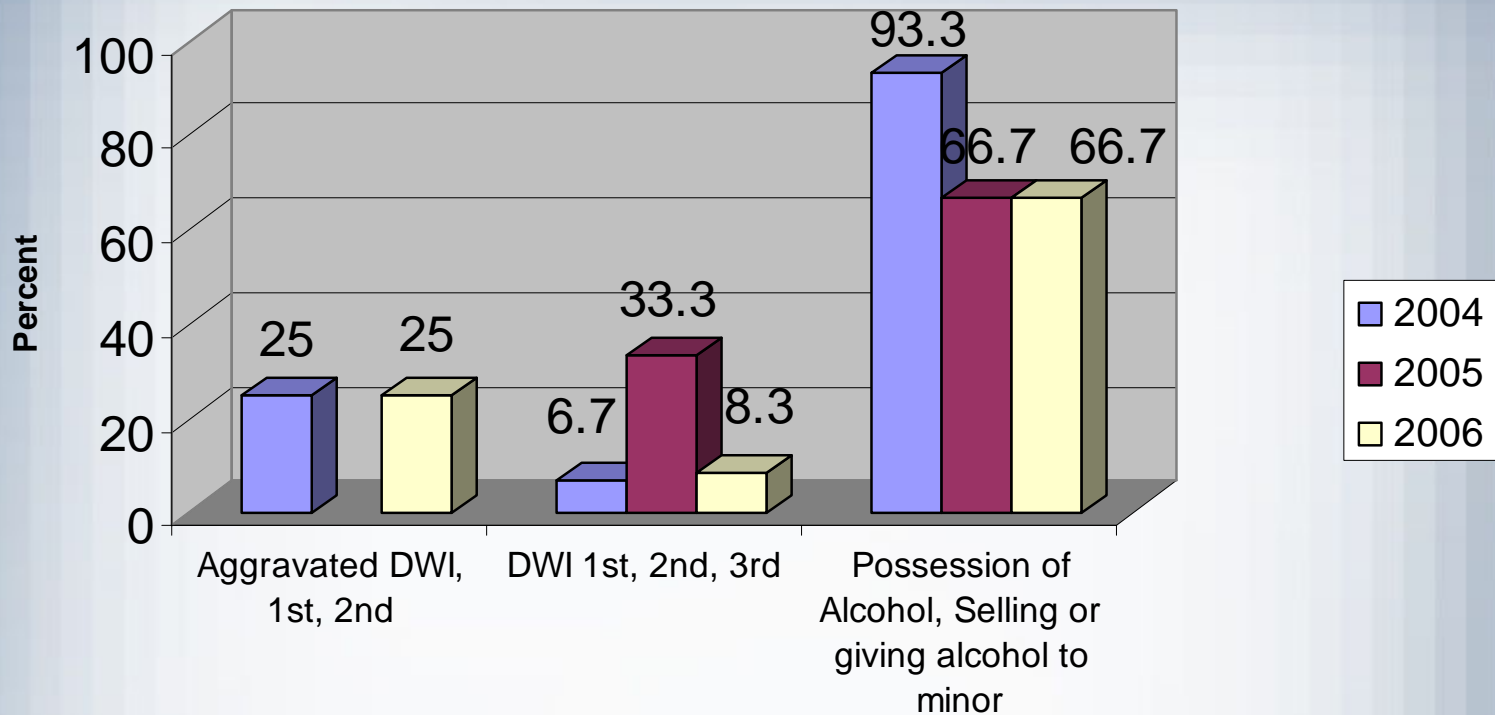
2004 - 2006 First Offense

DWI, Homicide by vehicle, Felony DWI & Great bodily Injury by Vehicle (DWI)



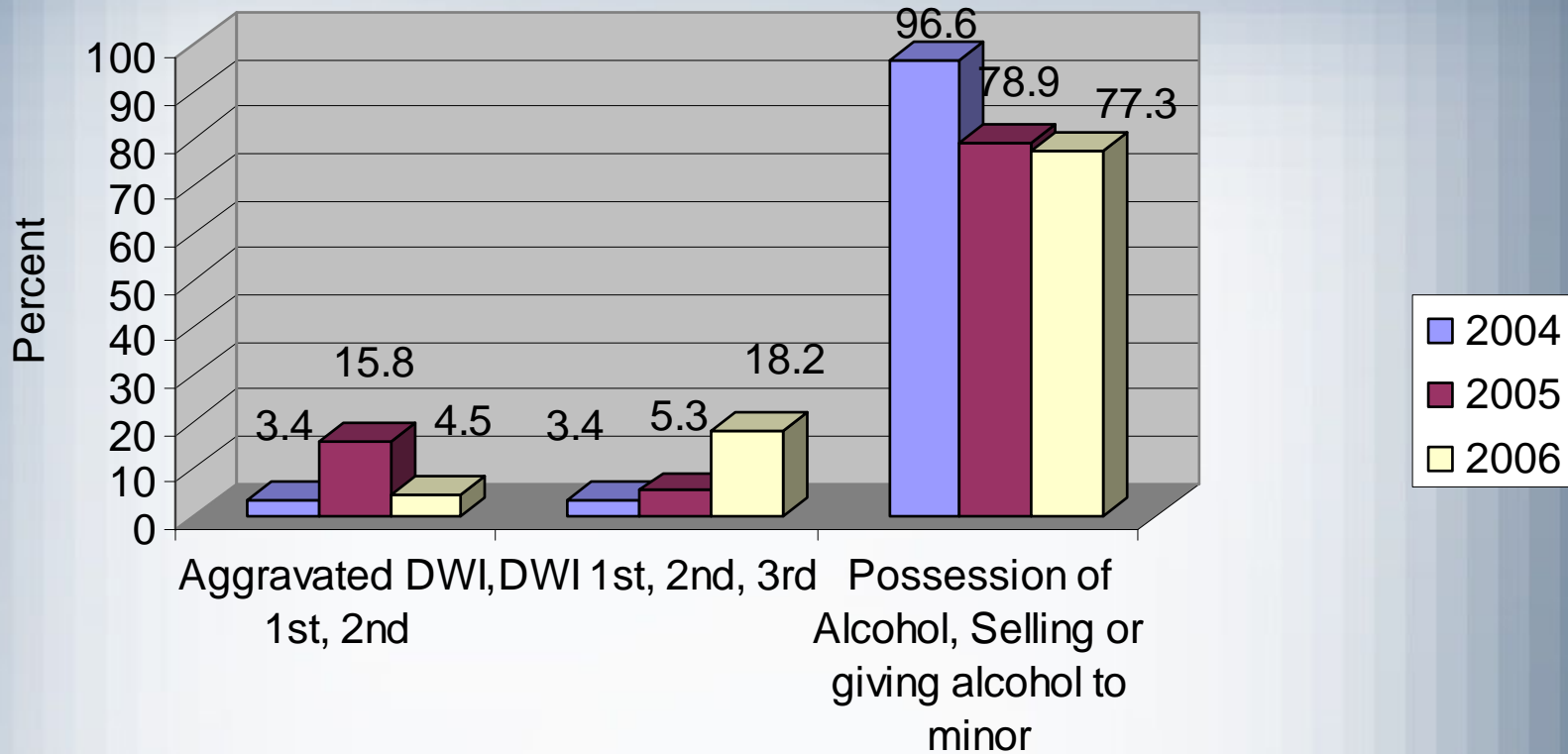


2004 - 2006 First Offense Aggravated DWI, 1st, 2nd



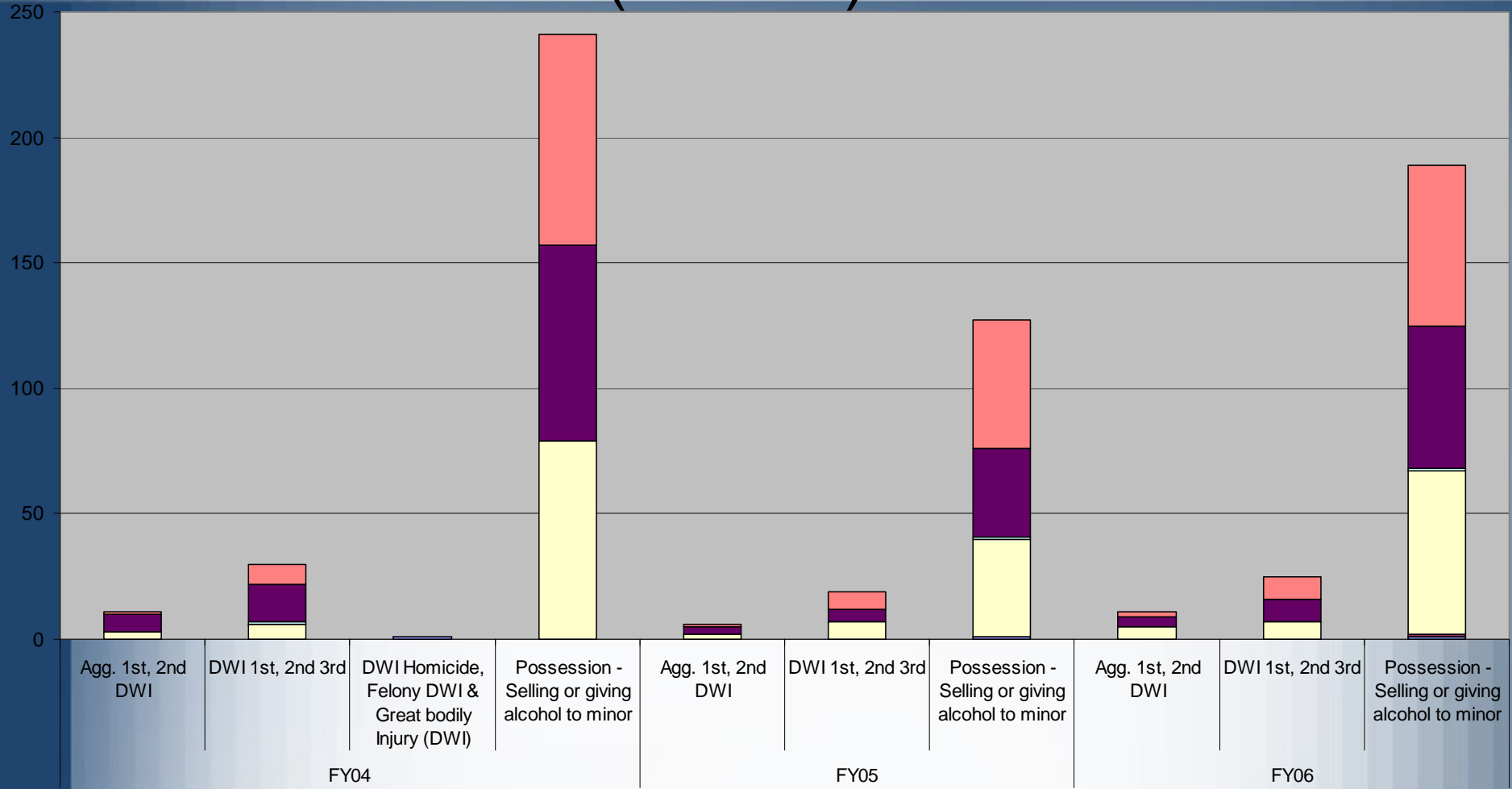


2004 - 2006 First Offense DWI 1st, 2nd, 3rd





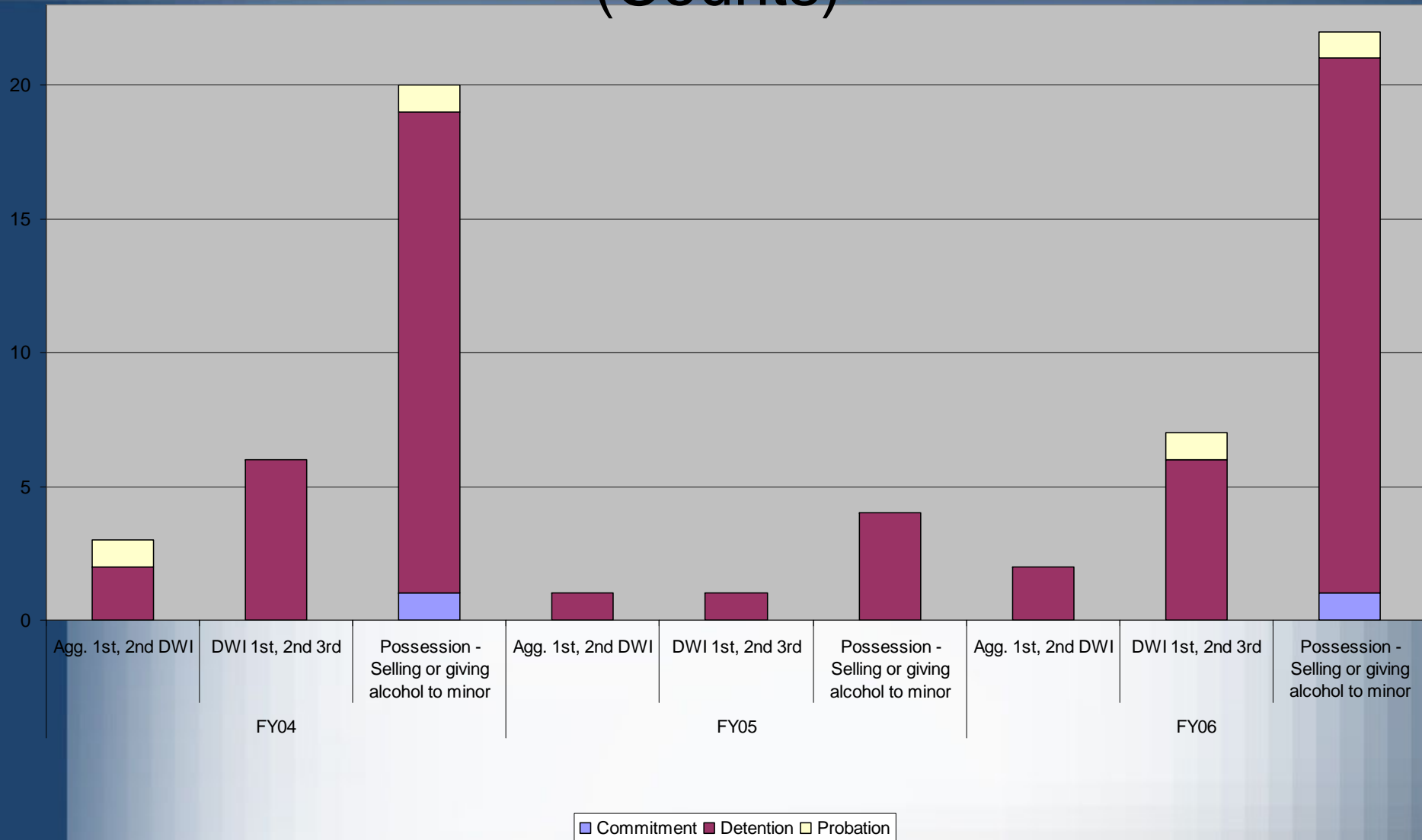
No Sanctions (Counts)



■ Adult Sanctions - DOC Facility
 ■ Adult Sanctions - Jail
 ■ Dismissed
 ■ Fines
 ■ Time Expired
 ■ Time Waiver

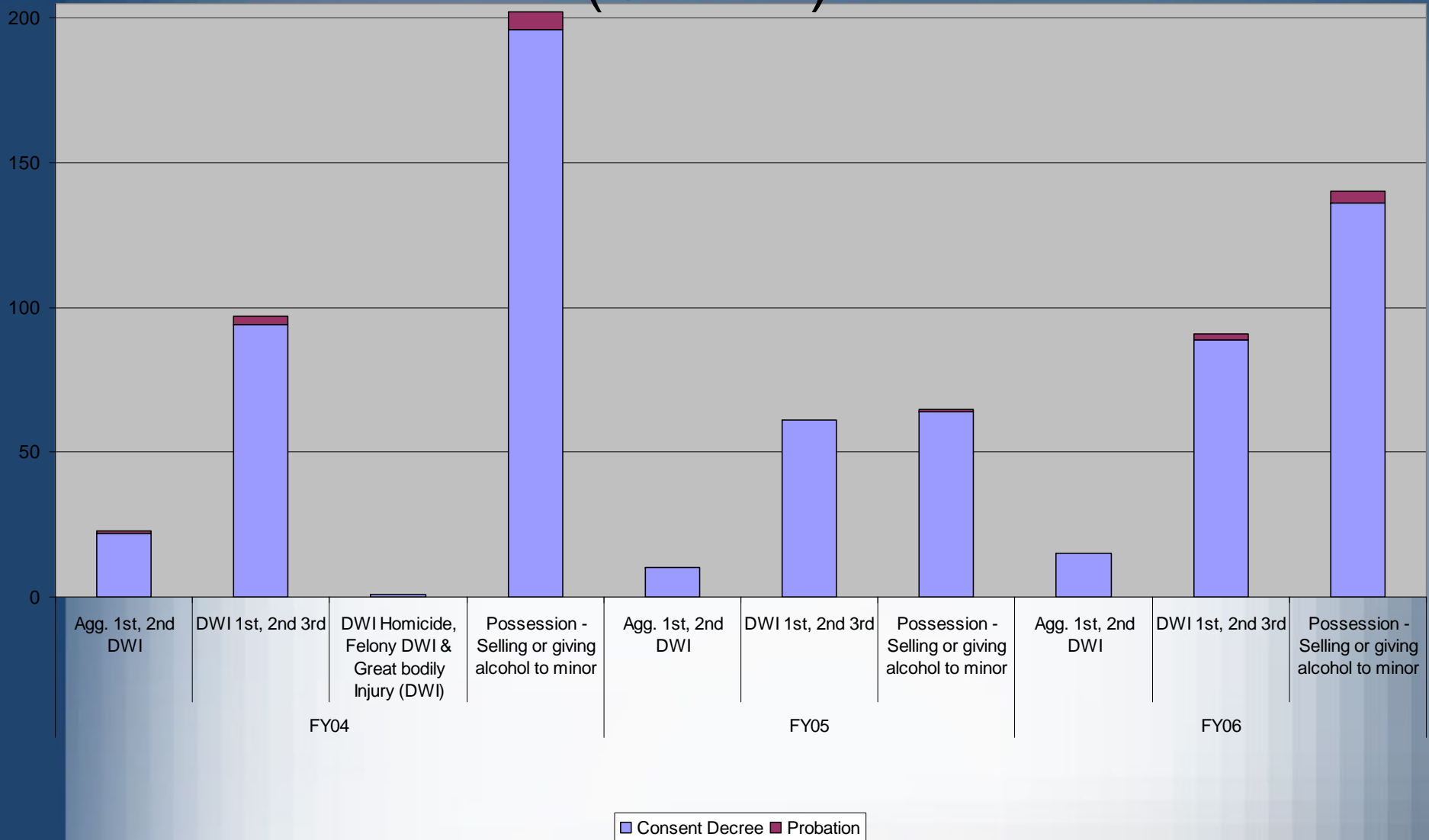


Sentenced up to 15 Days (Counts)



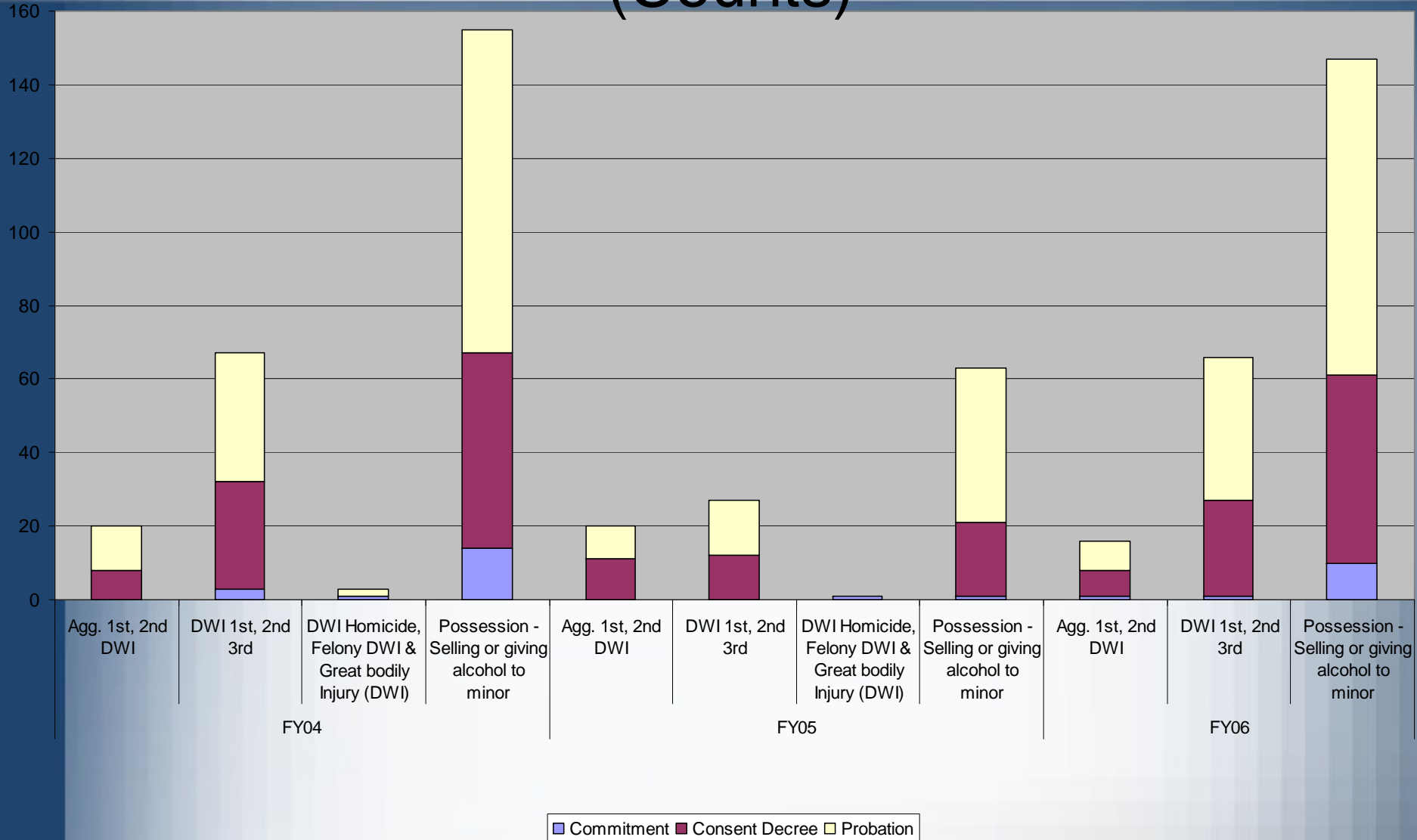


Sentenced up to 6 months (Counts)



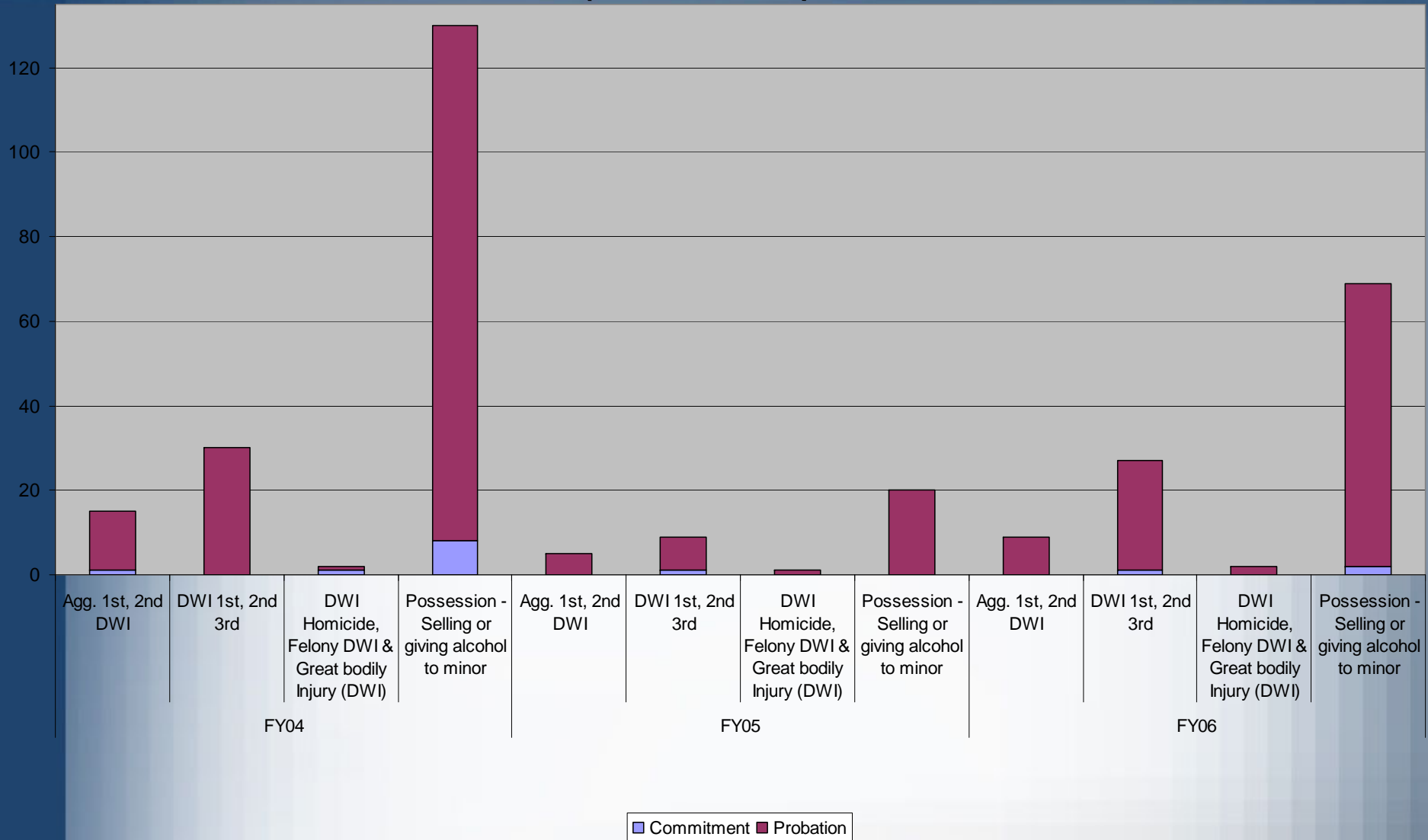


Sentenced up to One Year (Counts)





Sentenced up to 2 Years (Counts)





Next Steps

- ❖ Link juvenile justice data with adult corrections data to follow offenders
- ❖ Link juvenile justice data with NM Citation Tracking System (CTS) for arrest records
- ❖ Further analysis of subsequent alcohol related offenses
 - ❖ Time between offenses
- ❖ Examine relationships between non-alcohol related offenses and alcohol related offenses
 - ❖ Battery
 - ❖ Possession of marijuana
 - ❖ Other offenses



Acknowledgements

Dan Hall, Program Manager
JJS Data & FACTS Unit, CYFD

John Barela, Data Analyst, Facilities
JJS Data & FACTS Unit, CYFD

Jennifer Sanders, Management Analyst
JJS Data & FACTS Unit, CYFD

E-mail Judy Harmon
Judith.Harmon@state.nm.us