

NiTS

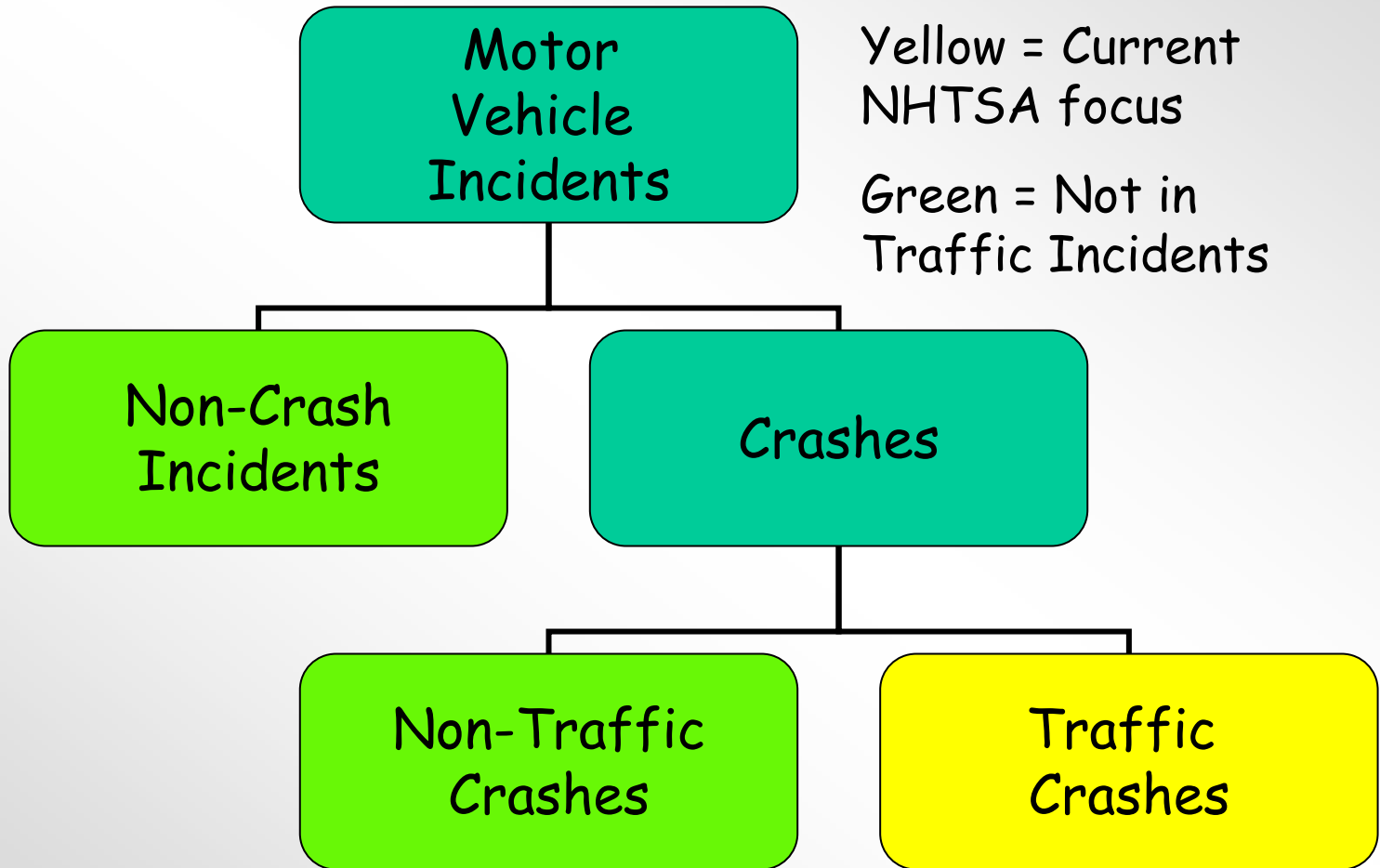
Not in Traffic Surveillance

Rory A. Austin, PhD
State Data System Technical Manager
State Data Reporting Systems Division
Office of Data Acquisitions

- **What are not in traffic incidents?**
- **What is not in traffic surveillance?**
- **What do we know about non-traffic crashes?**

Not in Traffic Incidents

Not in Traffic Incidents



- **Non-traffic crashes**
 - ◆ Occur in parking lots, on private property, etc.
 - ◆ Special emphasis on crashes involving vehicle backing into pedestrian or pedalcyclist
- **Non-crash incident examples**
 - ◆ Hyperthermia / hypothermia
 - ◆ Trunk entrapment
 - ◆ Power window strangulation
 - ◆ Carbon monoxide poisoning

Not in Traffic Surveillance (NiTS)

- **Sec. 10305 (Non-Traffic Incidents)**
 - ◆ *Passenger vehicle injuries and deaths*
 - ◆ *Publish data at least every two years*
- **Sec. 2012 (Backing)**
 - ◆ *Motor vehicle injuries and deaths*
 - ◆ *Including non-traffic crashes*
 - ◆ *Report to Congress January 1, 2009*

Not in Traffic Surveillance Current Concepts

- **A virtual system**
 - ◆ Use multiple existing systems
 - ◆ NHTSA databases and other sources
 - ◆ More complete picture than one system
- **To provide different types of data**
 - ◆ Non-traffic crashes & non-crash incidents
 - ◆ Fatality & injury data
 - ◆ Count & detailed data

Not in Traffic Surveillance Virtual System Concept

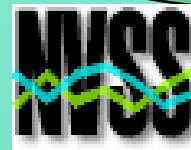
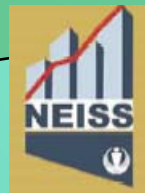
Detailed Investigations



Police Reports



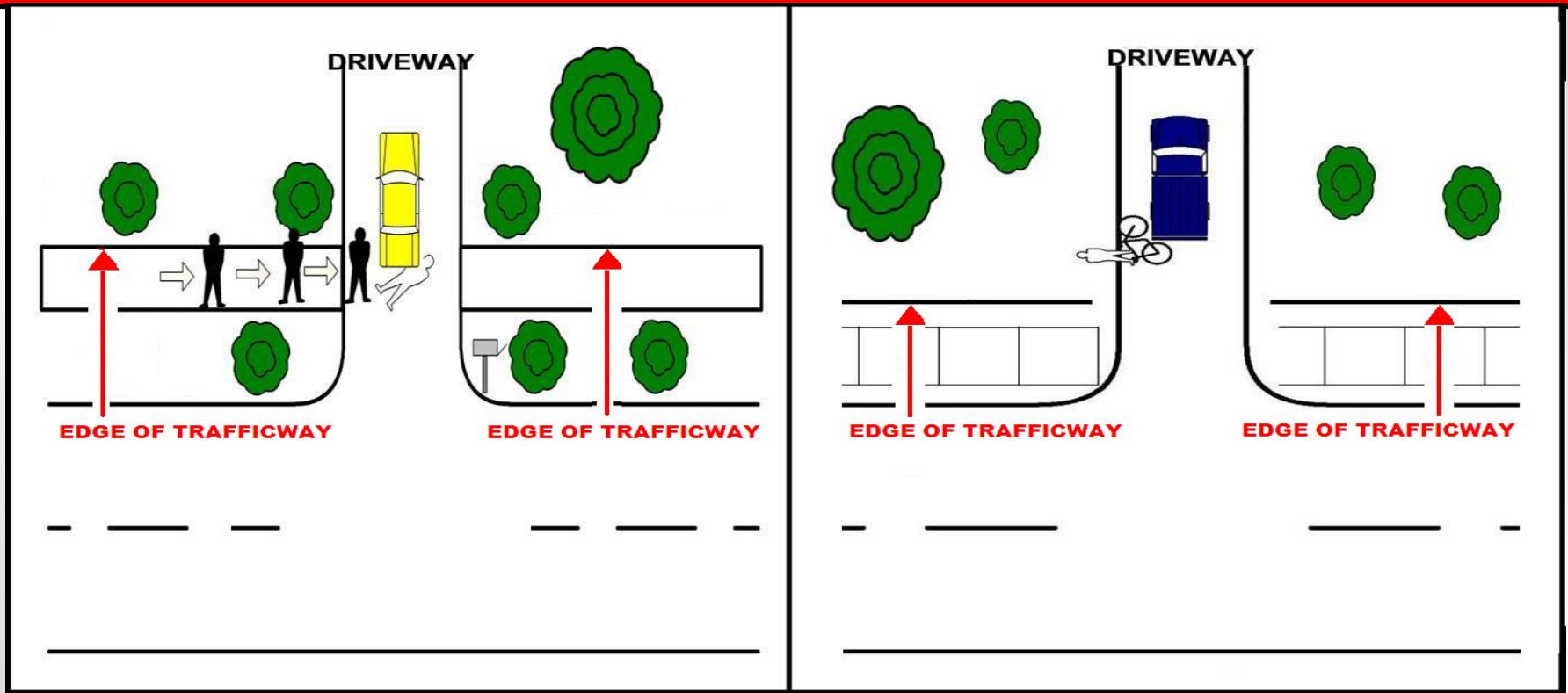
State Data



Surveillance Data

Not in Traffic Crashes

Traffic and Non-Traffic Example: Backover Crashes



Traffic Crash: Included in NHTSA crash databases

Non-Traffic Crash: (private property)
Not currently included in NHTSA crash databases

- **NHTSA's Fatality Analysis Reporting System (FARS)**
- **Requested all reports received in 2006 - but not entered in FARS - from FARS analysts in 8 States**
- **7 States participated**
 - ◆ **GA, ID, KY, MI, OH, OR & TX**
- **222 crashes**

- **85 crashes on the trafficway**
 - ◆ **Excluded from FARS per ANSI D.16**
 - Natural causes, suicide, homicide, etc.
 - Also fatalities more than 30 days after crash

- **137 crashes off the trafficway**
 - ◆ **25 excluded per ANSI D.16**
 - ◆ **112 nontraffic fatal crashes**

- **112 nontraffic fatal crashes**
 - ◆ **16 backover crashes**
 - ◆ **17 rollaway crashes**
 - ◆ **18 other crashes w/ non-motorist**
 - ◆ **61 other fatal crashes**
 - 30 involved “off road” motor vehicles

- **Many nontraffic fatal crashes involve non-motorists (46%)**
 - ◆ **Backovers accounted for 14% of total**
- **Another large group of nontraffic fatal crashes involve “off-road” motor vehicles (27%)**

- **NHTSA's State Data System (SDS)**
- **Electronic crash files from 31 participating States**
- **4 States with nontraffic crashes**
- **Analyzed up to five most recent years**
 - ◆ **KY (2000-04), IN (2004-05), NC (2001-05), and NE (2000-04)**

- **How many nontraffic crashes?**
- **Depends on State and severity**
 - ◆ **From <1 to 3 nontraffic fatal crashes per 100 traffic fatal crashes**
 - ◆ **From 2 to 8 nontraffic injury crashes per 100 traffic injury crashes**
 - ◆ **From 16 to 27 nontraffic PDO crashes per 100 traffic PDO crashes**

Nontraffic Crash Injuries

- **Number of nontraffic fatalities per 100 traffic fatalities in four States:**
 - ◆ **<1, 2, 2, 3**
- **Number of nontraffic injuries per 100 traffic injuries in four States:**
 - ◆ **2, 3, 3, 7**

- **Nontraffic injuries slightly more likely to involve children than traffic injuries**
- **Percent of injured ages 15 and younger in traffic versus nontraffic crashes:**
 - ◆ **10% vs. 12%**
 - ◆ **9% vs. 10%**
 - ◆ **12% vs. 16%**
 - ◆ **11% vs. 12%**

Nontraffic Crash Injuries

- **Nontraffic injuries slightly more likely to involve older persons than traffic injuries**
- **Percent of injured aged 61 and older in traffic versus nontraffic crashes:**
 - ◆ **9% vs. 12%**
 - ◆ **9% vs. 11%**
 - ◆ **9% vs. 10%**
 - ◆ **10% vs. 11%**

- **Nontraffic injuries more likely to involve non-motorists than traffic injuries**
- **Percent of injured non-motorists in traffic versus nontraffic crashes:**
 - ◆ **3% vs. 13%**
 - ◆ **2% vs. 17%**
 - ◆ **3% vs. 34%**
 - ◆ **3% vs. 21%**

NiTS Summary

- **Strategy is to collect as much information as possible from as many sources as possible**
- **With awareness that not all States or sources can provide the same amount of information or level of detail**
- **Cooperation in understanding problem is important for preventing injuries**

Thanks!

- **For your attention**
- **For all of your hard work**
- **And for your help in reducing ALL motor vehicle related fatalities and injuries**